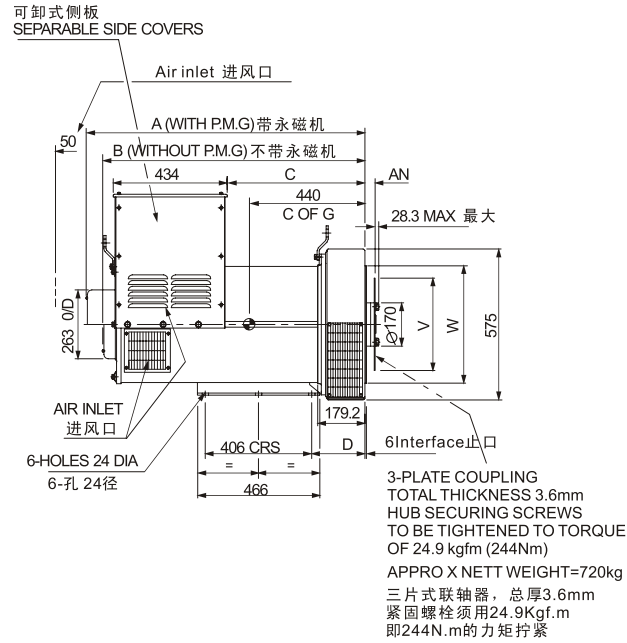


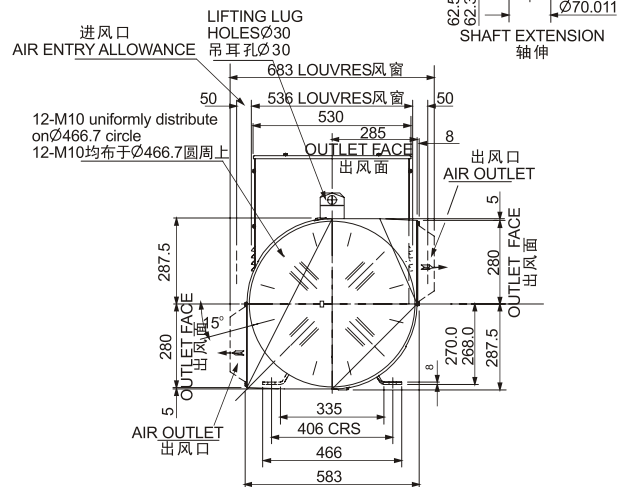
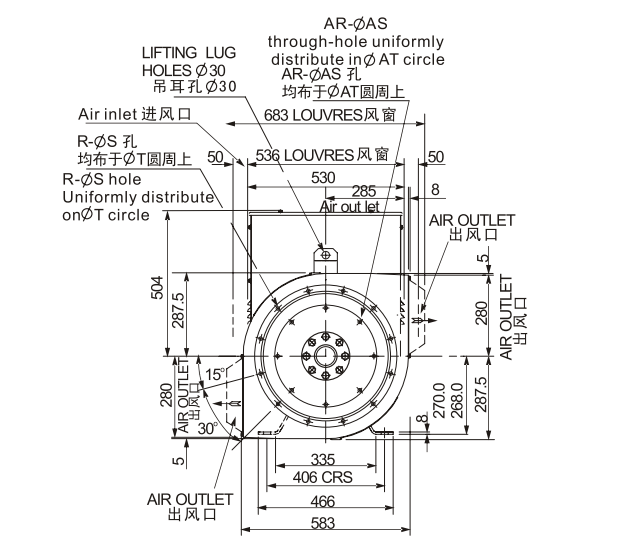
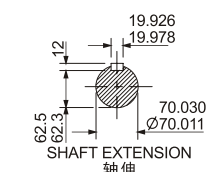
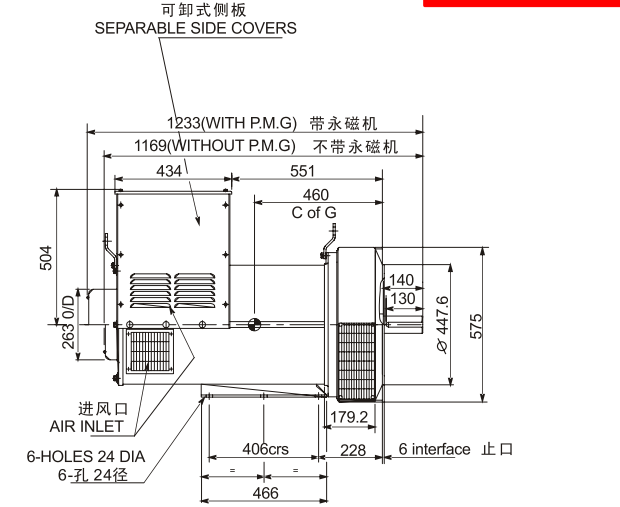
SLG274J/K 外形图 External dimension



单轴承 SINGLE BEARING



双轴承 DOUBLE BEARING



| FLANGE 法兰式过渡接套 (mm) | | | | | | | | |
|---------------------|--------|--------|-------|-------|----|------|-------|-------|
| S.A.E.NO. | A | B | C | D | R | S | T | W |
| 1 | 1063 | 1000 | 525 | 202 | 12 | 12.7 | 530.2 | 511.1 |
| 2 | 1063 | 1000 | 525 | 202 | 12 | 11 | 466.7 | 447.6 |
| 3 | 1086.5 | 1023.5 | 548.5 | 225.5 | 12 | 11 | 428.6 | 409.5 |

| DISC COUPLING 盘片式联轴器 (mm) | | | | | | |
|---------------------------|-------|----|------|-------|-------|--|
| S.A.E.NO. | AN | AR | AS | AT | V | |
| 11.5 | 39.68 | 8 | 11 | 333.3 | 352.3 | |
| 14 | 25.40 | 8 | 13.5 | 438.2 | 466.6 | |

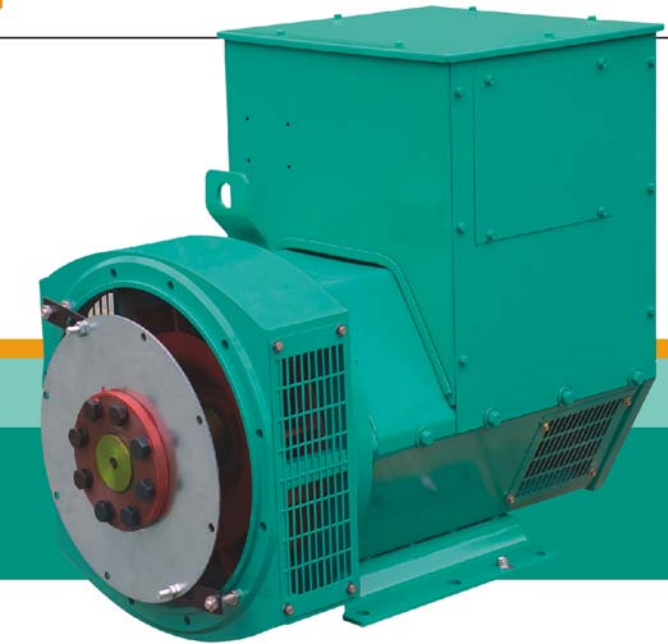
| SAE NO SELECTOR CHOWT 驱动片和过渡法兰配套表 | | | |
|-----------------------------------|-------|---------|-------|
| | SAE10 | SAE11.5 | SAE14 |
| SAE 1 | | • | • |
| SAE 2 | | • | |
| SAE 3 | • | | |

NEW ERA SLG

系列三相无刷同步发电机
SERIES THREE-PHASE BRUSHLESS SYNCHRONOUS ALTERNATOR



SLG274
TECHNICAL DATA SHEET



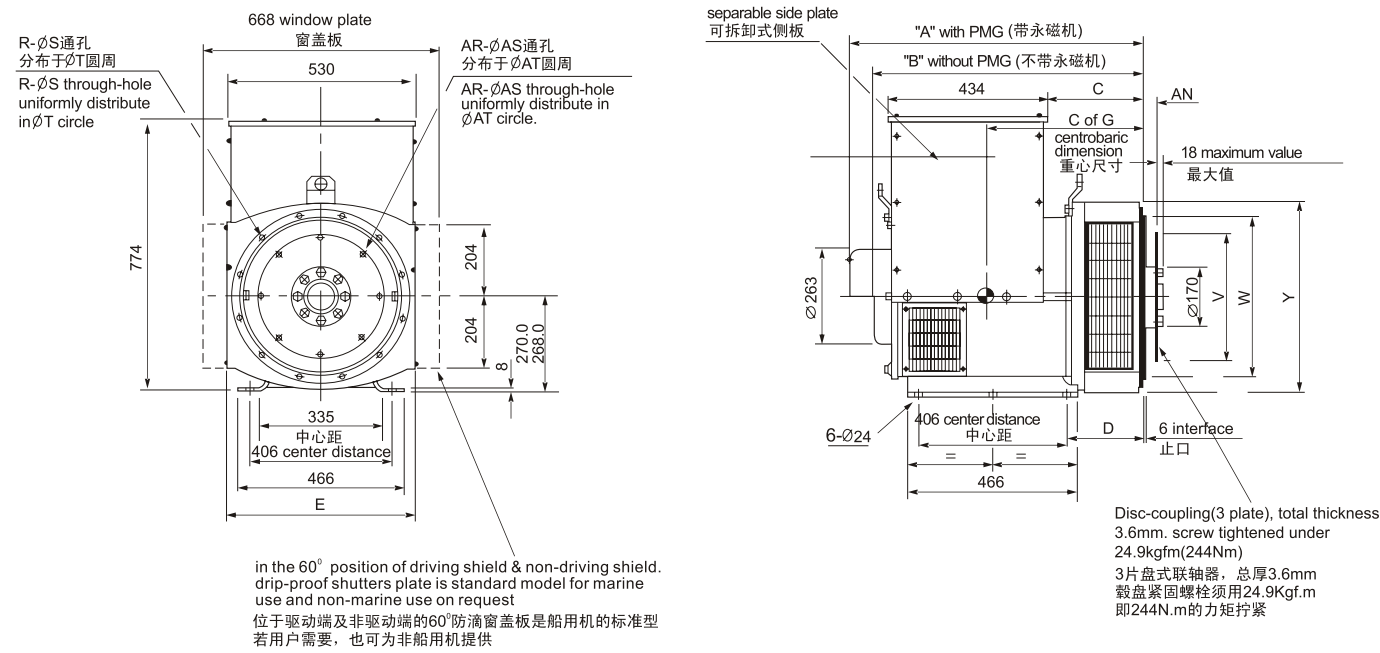
50Hz CLASS "H"

| RATINGS 额定/温升/环境温度° Duty / Temp Rise / Ambient T° | 绕组形式 311 / 功率因数0.8 Winding 311 / 0.8 Power Factor | | | | | | | | | | | | | | | | | |
|---|--|------|-----|-----|-----|------|---------------------------------|-------|-----|-------|-----|-------|-----|-------|-----|-------|-----|-------|
| | 持续/125k/40°C Cont./125K/40°C | | | | | | 持续/125k/40°C Cont./125K/40°C | | | | | | | | | | | |
| 相数 PHASE | 三相 3 PHASE | | | | | | 单相 1 PHASE | | | | | | | | | | | |
| 星形串联 SERIES STAR | 380 | | | | | | 400 | | | | | | 415 | | | | | |
| 星形并联 PARALLEL STAR | 190 | | | | | | 200 | | | | | | 208 | | | | | |
| 三角形串联 SERIES DELTA | 220 | | | | | | 230 | | | | | | 240 | | | | | |
| 双三角形并联 DOUBLE DELTA | | | | | | | | | | | | | 220 | 230 | 240 | | | |
| | KVA | KW | KVA | KW | KVA | KW | KVA | KW | KVA | KW | KVA | KW | KVA | KW | KVA | KW | KVA | KW |
| SLG274C | 100 | 80 | 100 | 80 | 100 | 80 | 60 | 48 | 60 | 48 | 60 | 48 | 60 | 48 | 60 | 48 | 60 | 48 |
| SLG274D | 114 | 91.2 | 120 | 96 | 114 | 91.2 | 68 | 54.4 | 68 | 54.4 | 68 | 54.4 | 68 | 54.4 | 68 | 54.4 | 68 | 54.4 |
| SLG274E | 140 | 112 | 140 | 112 | 140 | 112 | 85 | 68 | 85 | 68 | 85 | 68 | 85 | 68 | 85 | 68 | 85 | 68 |
| SLG274F | 160 | 128 | 160 | 128 | 160 | 128 | 96 | 76.8 | 96 | 76.8 | 96 | 76.8 | 96 | 76.8 | 96 | 76.8 | 96 | 76.8 |
| SLG274G | 180 | 144 | 180 | 144 | 180 | 144 | 108 | 86.4 | 108 | 86.4 | 108 | 86.4 | 108 | 86.4 | 108 | 86.4 | 108 | 86.4 |
| SLG274H | 200 | 160 | 200 | 160 | 200 | 160 | 120 | 96 | 120 | 96 | 120 | 96 | 120 | 96 | 120 | 96 | 120 | 96 |
| SLG274J | 230 | 184 | 230 | 184 | 230 | 184 | 138 | 110.4 | 138 | 110.4 | 138 | 110.4 | 138 | 110.4 | 138 | 110.4 | 138 | 110.4 |
| SLG274K | 250 | 200 | 250 | 200 | 250 | 200 | 150 | 120 | 150 | 120 | 150 | 120 | 150 | 120 | 150 | 120 | 150 | 120 |

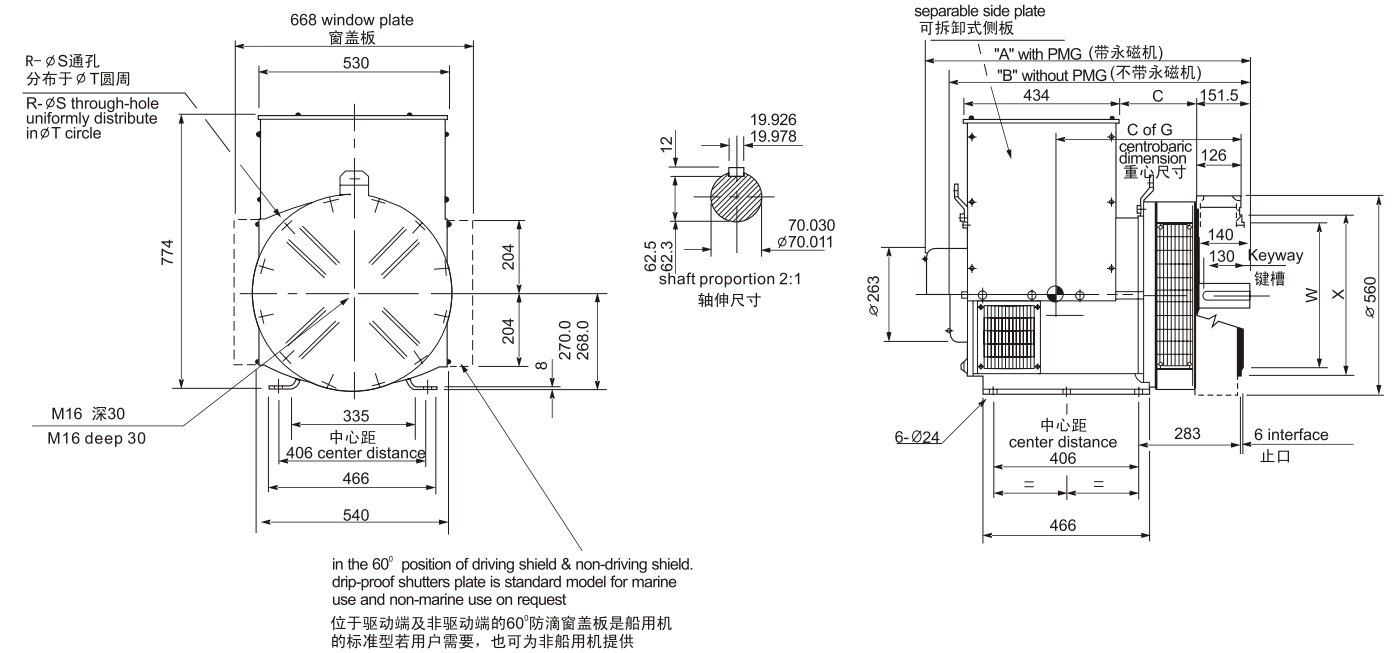
60Hz CLASS "H"

| RATINGS 额定/温升/环境温度° Duty / Temp Rise / Ambient T° | 绕组形式 311 / 功率因数0.8 Winding 311 / 0.8 Power Factor | | | | | | | | | | | | | | | | | |
|---|--|-------|-------|-------|-------|-------|---------------------------------|-------|-------|------|-------|-------|-------|-------|-----|----|-----|----|
| | 持续/125k/40°C Cont./125K/40°C | | | | | | 持续/125k/40°C Cont./125K/40°C | | | | | | | | | | | |
| 相数 PHASE | 三相 3 PHASE | | | | | | 单相 1 PHASE | | | | | | | | | | | |
| 星形串联 SERIES STAR | 416 | | | | | | 440 | | | | | | 460 | 480 | | | | |
| 星形并联 PARALLEL STAR | 208 | | | | | | 220 | | | | | | 230 | 240 | | | | |
| 三角形串联 SERIES DELTA | 240 | | | | | | 254 | | | | | | 266 | 277 | | | | |
| 双三角形并联 DOUBLE DELTA | | | | | | | | | | | | | 220 | 230 | 240 | | | |
| | KVA | KW | KVA | KW | KVA | KW | KVA | KW | KVA | KW | KVA | KW | KVA | KW | KVA | KW | KVA | KW |
| SLG274C | 112.5 | 90 | 117.5 | 94 | 117.5 | 94 | 125 | 100 | 61.3 | 49 | 64.4 | 51.5 | 67.5 | 54 | | | | |
| SLG274D | 131.3 | 105 | 137.5 | 110 | 137.5 | 110 | 146.3 | 117 | 72 | 57.6 | 75 | 60 | 78.8 | 63 | | | | |
| SLG274E | 160 | 128 | 167.5 | 134 | 167.5 | 134 | 178.8 | 143 | 84 | 67.2 | 90 | 72 | 96 | 76.8 | | | | |
| SLG274F | 181.3 | 145 | 190 | 152 | 190 | 152 | 206.3 | 165 | 97.5 | 78 | 103.1 | 82.5 | 108.8 | 87 | | | | |
| SLG274G | 205 | 164.5 | 218.5 | 174.8 | 218.5 | 174.8 | 231.4 | 185.1 | 110.5 | 88.4 | 115.7 | 92.6 | 123.4 | 98.7 | | | | |
| SLG274H | 237.5 | 190 | 245 | 196 | 245 | 196 | 255 | 204 | 127.5 | 102 | 135 | 108 | 142.5 | 114 | | | | |
| SLG274J | 296 | 215.2 | 281 | 224.8 | 294 | 215.2 | 300 | 240 | 150 | 120 | 157 | 125.6 | 161 | 128.8 | | | | |
| SLG274K | 291 | 232.8 | 299 | 239.2 | 235.2 | 250 | 312.5 | 250 | 155 | 124 | 166 | 132.8 | 175 | 140 | | | | |

SLG274C-H 单轴承外形图 Single bearing external dimension



SLG274C-H 双轴承外形图 Double bearing external dimension



| DIMENSION 尺寸(mm) | | | | | | | | | |
|------------------|----------|--------|-------|-------|-----|--------|---------|---------|--------------|
| | 型号 Model | A | B | C | E | C of G | N.W(kg) | G.W(kg) | LXWXH(mm) |
| SAE1 | SLG274C | 813.3 | 750.3 | 274.3 | 554 | 365 | 385 | 415 | 900X650X975 |
| | SLG274D | 813.3 | 750.3 | 274.3 | 554 | 375 | 405 | 435 | 900X650X975 |
| | SLG274E | 928.3 | 865.3 | 389.3 | 554 | 390 | 455 | 485 | 1020X650X975 |
| | SLG274F | 928.3 | 865.3 | 389.3 | 554 | 415 | 500 | 530 | 1020X650X975 |
| | SLG274G | 978.3 | 915.3 | 439.3 | 554 | 435 | 550 | 580 | 1080X650X975 |
| | SLG274H | 1018.3 | 955.3 | 479.3 | 554 | 455 | 600 | 630 | 1110X650X975 |
| SAE2&3 | SLG274C | 799 | 736 | 260 | 544 | 398 | 385 | 415 | 900X650X975 |
| | SLG274D | 799 | 736 | 260 | 544 | 422 | 405 | 435 | 900X650X975 |
| | SLG274E | 914 | 851 | 375 | 544 | 489 | 455 | 485 | 1020X650X975 |
| | SLG274F | 914 | 851 | 375 | 544 | 527 | 500 | 530 | 1020X650X975 |
| | SLG274G | 964 | 904 | 425 | 544 | 579 | 550 | 580 | 1080X650X975 |
| | SLG274H | 1004 | 941 | 465 | 544 | 625 | 600 | 630 | 1110X650X975 |

| FLANGE 法兰式过渡接套 (mm) | | | | | | | |
|---------------------|-------|----|------|-------|-------|-----|-----|
| S.A.E.NO. | D | R | S | T | W | X | Y |
| 1 | 216.3 | 12 | 12.7 | 530.2 | 511.1 | 553 | 580 |
| 2 | 202 | 12 | 11 | 466.7 | 447.6 | 490 | 530 |
| 3 | 202 | 12 | 11 | 428.6 | 409.5 | 451 | 530 |

| DISC COUPLING 盘片式联轴器 (mm) | | | | | |
|---------------------------|-------|----|------|-------|-------|
| S.A.E.NO. | AN | AR | AS | AT | V |
| 10 | 53.98 | 8 | 11 | 295.3 | 314.2 |
| 11.5 | 39.68 | 8 | 11 | 333.3 | 352.3 |
| 14 | 25.40 | 8 | 13.5 | 438.2 | 466.6 |

| DIMENSION 尺寸(mm) | | | | |
|------------------|------|------|-----|--------|
| 型号 Model | A | B | C | C of G |
| SLG274C | 905 | 842 | 215 | 420 |
| SLG274D | 905 | 842 | 215 | 430 |
| SLG274E | 1020 | 957 | 330 | 445 |
| SLG274F | 1020 | 957 | 330 | 475 |
| SLG274G | 1070 | 1007 | 380 | 490 |
| SLG274H | 1110 | 1047 | 420 | 510 |

| FLANGE 法兰式过渡接套 (mm) | | | | | |
|---------------------|----|------|-------|-------|-----|
| S.A.E.NO. | R | S | T | W | X |
| 1 | 12 | 12.7 | 530.2 | 511.1 | 553 |
| 2 | 12 | 11 | 466.7 | 447.6 | 495 |
| 3 | 12 | 11 | 428.6 | 409.5 | 451 |

| TRANSPORTATION DATA 运输数据 | | | |
|--------------------------|---------|---------|--------------|
| 型号 Model | N.W(kg) | G.W(kg) | LXWXH(mm) |
| SLG274C | 395 | 435 | 980X650X975 |
| SLG274D | 420 | 460 | 980X650X975 |
| SLG274E | 470 | 510 | 1080X650X975 |
| SLG274F | 510 | 550 | 1080X650X975 |
| SLG274G | 560 | 600 | 1110X650X975 |
| SLG274H | 610 | 650 | 1160X650X980 |